

# Snowman Mitten

## **Supplies:**

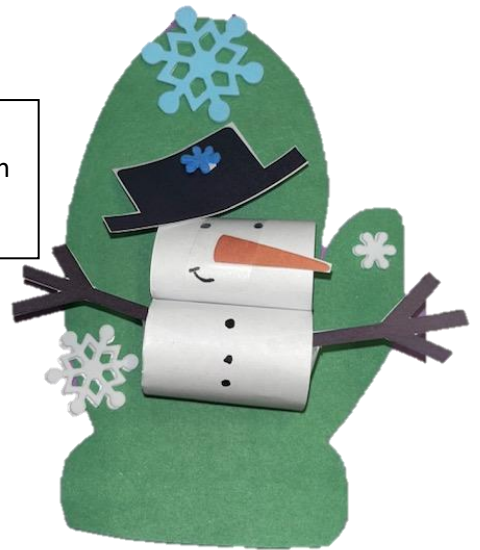
- Mitten outline
- 2 strips white paper
- Snowman parts (hat, carrot nose, arms)
- Glitter sticker paper
- Snowflake foam stickers
- Crayons/markers/color pencils (**not provided**)
- Glue or tape (**not provided**)
- Scissors (**not provided**)

1. Roll the white paper strip into a circle and glue or tape the ends together. Then, glue or tape the two circles together, one stacked on the other. (This will be your snowman's body.)



2. Draw on your snowman's face! Glue or tape on their hat, arms, carrot nose, and any other decorations you think it might need!

3. Glue or tape your snowman to the mitten outline. Decorate your mitten with the snowflake stickers! You can even draw more items on the mitten if you'd like!



4. Add the glitter sticker to the bottom of the mitten to be the cuff. You can hang your snowman up to brighten up a cold, winter day!